

HOZELOCK

2803

20 Pot Watering Kit



1

Year guarantee
Ans de garantie
Jahre garantie
Jaar garantie
Años de garantía
Χρόνια εγγύηση

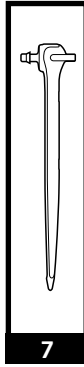
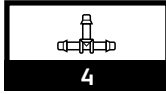
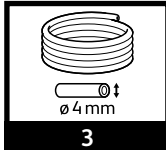
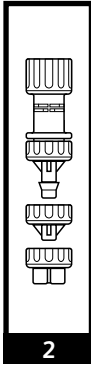
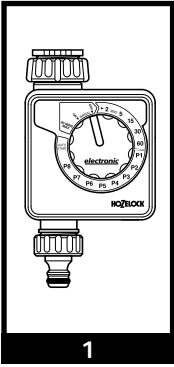


Hozelock Ltd.
Midpoint Park, Birmingham,
B76 1AB, England
Tel: +44 (0) 121 313 1122

www.hozelock.com

43148-000

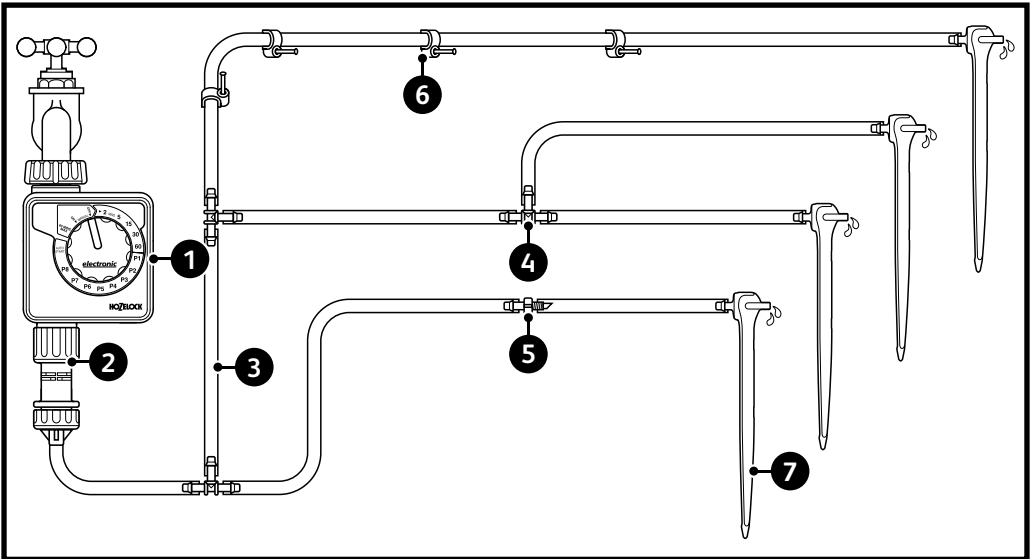
Contents



- 1** AC1 Timer (x1)
- 2** Pressure Reducer (x1)
- 3** 10m (ø4mm) Micro Tube
- 4** T-Connector (x19)
- 5** Straight Connector (x5)
- 6** Wall Clip (x5)
- 7** Dripper with Stake (x20)

* Component aesthetics may vary.

Example layout



Installing the system

A - Control

The system can be connected to the tap using the following methods:

- Fit the AC1 Timer (1) to the outdoor tap and then screw the Pressure Regulator (2) onto the timer.
- Alternatively, screw the Pressure Regulator (2) directly onto the outside tap.

1 AC1 Timer

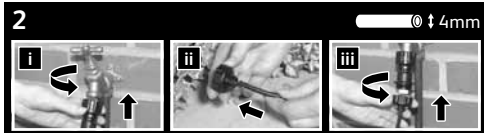
Automatically control how you water your garden, saving you time, water and effort. The AC1 provides the flexibility to adjust the watering duration, frequency and start time, providing extensive control for all your watering needs. Requires 2 x C type (LR14) alkaline batteries - not included.



2 Pressure Reducer

Reduces water pressure delivered from the mains tap to your system, to ensure optimal performance. An integrated filter prevents dirty water affecting dripper performance.

Connect the Pressure Regulator to the Micro Tube by using the appropriate 4mm adaptor and push the Micro Tube through the centre.

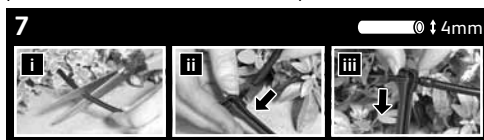


C - Drippers

Drippers can be fitted onto the end of the Micro Tube.

7 Dripper with Stake

With its compact design and integrated spike, the dripper is easily secured into place and discreetly delivers water to your pots and borders at a rate of 4 litres per hour.



Calculating the capacity of the system

If fitting a large system, calculate the flow from the supply, and therefore how many accessories the flow will support:

- Using a pressure regulator with the tap fully on, time in seconds how long it will take to fill a bucket of known volume in litres.
- Multiply the number of litres in your bucket by 3600, and divide by the number of seconds it took to fill. This will give you your maximum flow rate of litres per hour.
- Each dripper has a given flow rate, the total water requirement of all the drippers that you use added together should not exceed the maximum flow rate.

E.g.:

- A 9 litre bucket is filled in 15 seconds
- 9 litres x 3600 = 42400
- 42400/15 seconds = 2160

If more drippers are required than the maximum flow permits, separate the system into sections that can be run at different times. If you wish to automate this you will need more than one water computer.

Maintenance

At the end of the season, open all flow control valves and remove end sleeves. Flush with water to clean, and then drain to avoid frost damage. Remove the pressure regulator and water computer and store away from frost. All drippers may be dismantled for cleaning. Soak in an equal mixture of vinegar and water to remove any residues.

Contact

For product advice please contact:

Hozelock Consumer Services,
Hozelock Ltd., Midpoint Park, Birmingham, B76 1AB.

Tel: 0121 313 1122

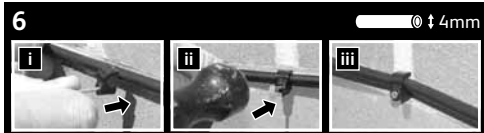
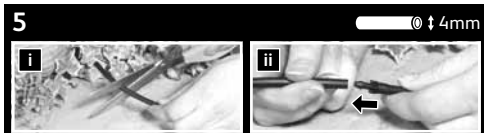
www.hozelock.com

B - Pipeline

3 Micro Tube

A small flexible 4mm tube used to transport water around small systems. This can be cut and adapted to create your ideal watering system layout. It efficiently carries water from the main supply and delivers it to your plants via a network of drippers. Adjust your system using Straight Connectors (5) or split the flow using T-Connectors (4). Secure in place using Wall Clips (6).

Note: No one length of Micro Tube should be more than 15m long.



4 T-Connectors

Enable you to customise the water flow around your garden by allowing you to alter and extend the layout of your watering system.



Occasional slight leakage can occur from the connection point. This usually seals over time, but ensure the fitting is correctly inserted at a 90° angle.

